



## INFORMATION

# Using your Aquadopp Generation 2

Below you will find some useful information about how to get started using your Aquadopp 2 instrument. You will find links to the configuration software and details about where to find more comprehensive information about the product. If something is missing or unclear, please contact your local Nortek representative.

### Nortek Deployment software

A web-based application called Nortek Deployment is used to operate and configure the Generation 2 Aquadopps. This software can be launched from your web browser by visiting [deployment.nortekgroup.com](https://deployment.nortekgroup.com), but can also be installed from Microsoft Store or downloaded as an offline installer file.

### Guides and manuals

A comprehensive help guide and details on how to operate and configure your instrument is found in the Nortek Deployment software wizard. The software also has a support section where you can search for relevant FAQ.

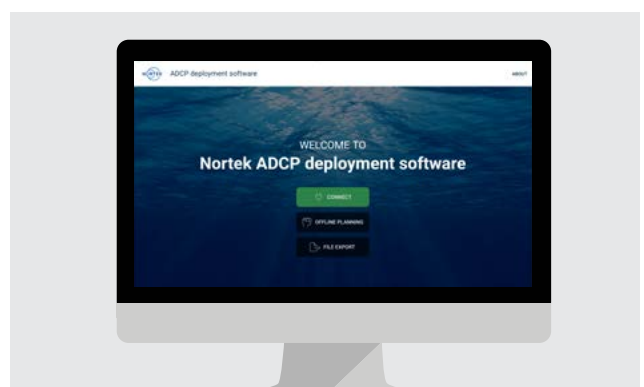
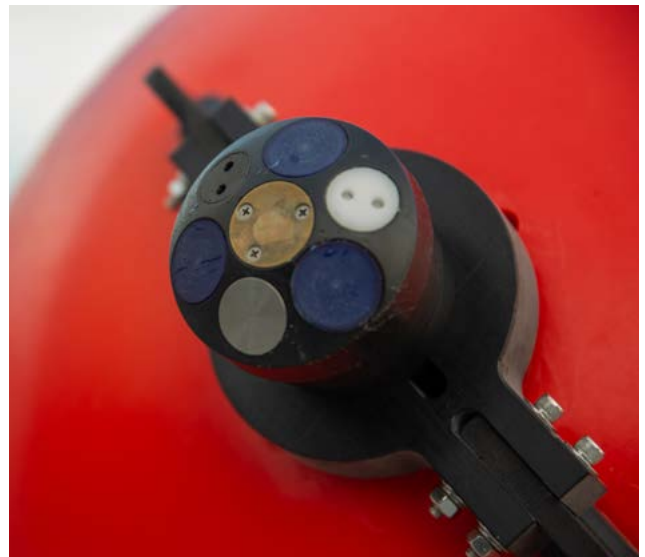
In addition to the help sections in the software, the following relevant manuals are available in PDF on our support site:

- Integrator's Guide
- Principles of Operation - Currents
- Principle of Operation - Waves

### What's new?

Full details about the updates made to the Generation 2 Aquadopps can be found in the release notes here:

<https://www.nortekgroup.com/knowledge-center/wiki/aquadopp-awac-release-notes>



Visit this link to find the Nortek Deployment software:  
<https://deployment.nortekgroup.com/>

# AQUADOPP GENERATION 2

## How to get started



### Connecting to the software

Connect the instrument to your computer using the supplied serial cable (RS422) and USB converter. Make sure the instrument is powered using the external power supply.

How to connect to your instrument is described step-by-step in the Nortek deployment software help wizard under the **Connection** tab



If you need to plan your deployment without being connected to an instrument, you can do so in the software by connecting to a **virtual instrument**



Once you've completed all the steps, the instrument should be connected.



### Opening the instrument

To open the instrument, hold the housing in one hand and unscrew the endbell nut by turning it counter-clockwise (**Step 1**).

Remove the endbell (**Step 2**), by gently pushing or pulling it straight out of the housing (Do not twist).

Pull out the battery cradle from the housing (**Step 3**).



### Changing the batteries

The Aquadopp 2 can accommodate up to either three alkaline 50Wh, three lithium 165Wh or three rechargeable lithium-ion 75Wh batteries. **Do not mix alkaline and lithium batteries!**

Start by connecting the battery harness (female) to the 2-pin connectors (male) that are attached to the battery cradle (**Step 4**). Then, place the new battery into the cradle (**Step 5**). Finally, tightly secure the battery in place using the attached strap (**Step 6**). Repeat for up to three batteries (**Step 7**).

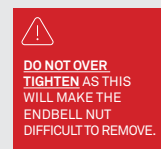
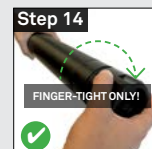
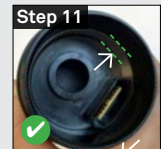


### Closing the instrument

Place the battery cradle back into the housing (**Step 8**) ensuring that the cradle connector mates with the head connector (**Step 9**).

The battery cradle only fits one way and the correct mating is indicated by a visible ring (1 cm) of aluminium (**Steps 10 & 11**). Gently insert the endbell until it mates with the housing (**Step 12**).

Gently screw the endbell nut on to the housing by turning it clockwise (**Steps 13 & 14**).



Need help? Contact us at [support@nortekgroup.com](mailto:support@nortekgroup.com)

