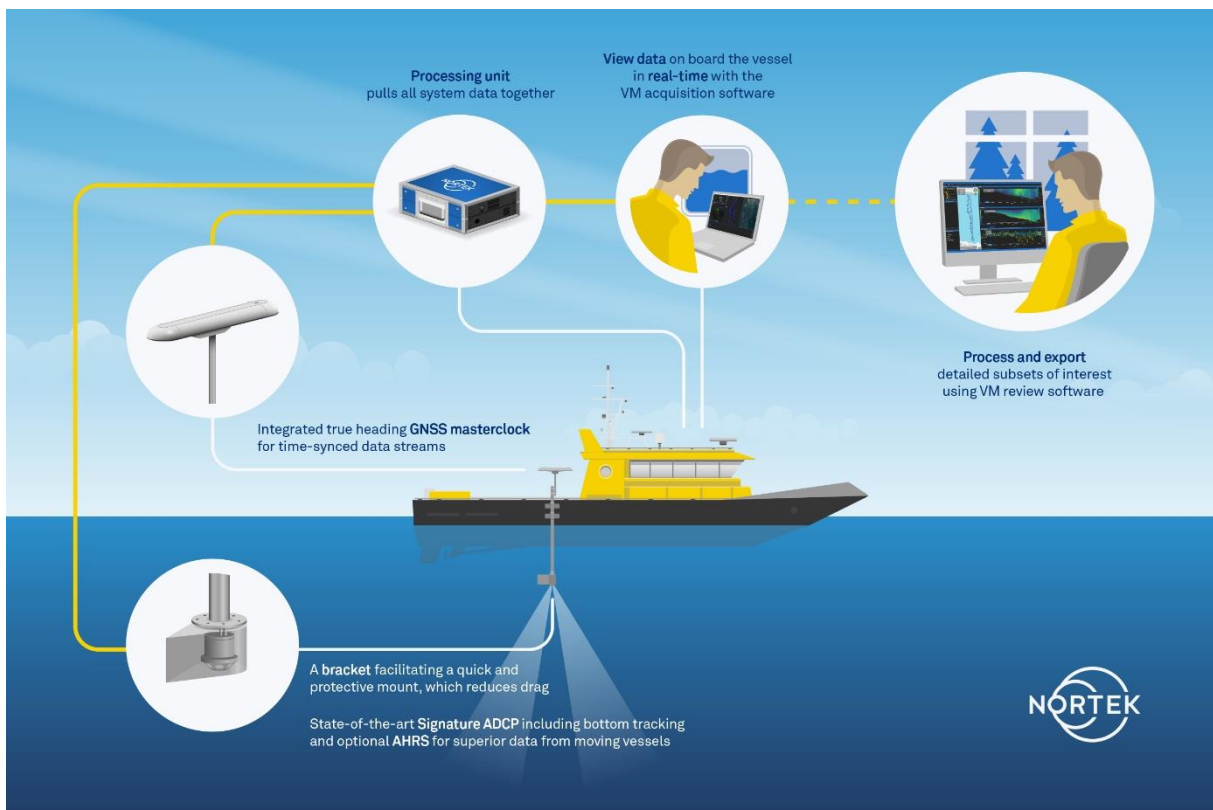




NORTEK

Quick guide

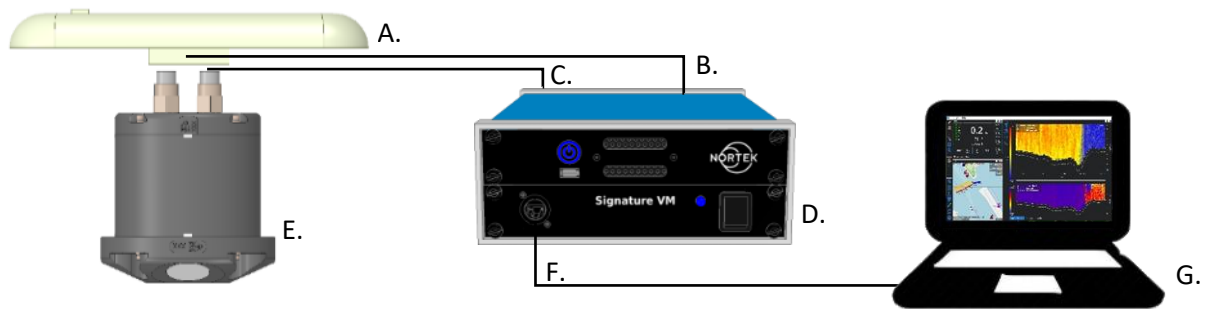
NORTEK VM COASTAL



This short guide is meant to be an overview of the resources available and how you can connect to your VM Coastal system for a first time use. Once you have started the computer and the VM software, you will have access to the Nortek VM Acquisition manual. You can also find it at [Nortek VM Coastal and VM Ocean – Nortek Support Center](#)

Nortek VM Coastal – Quick guide

To bench test the system you require the following items:

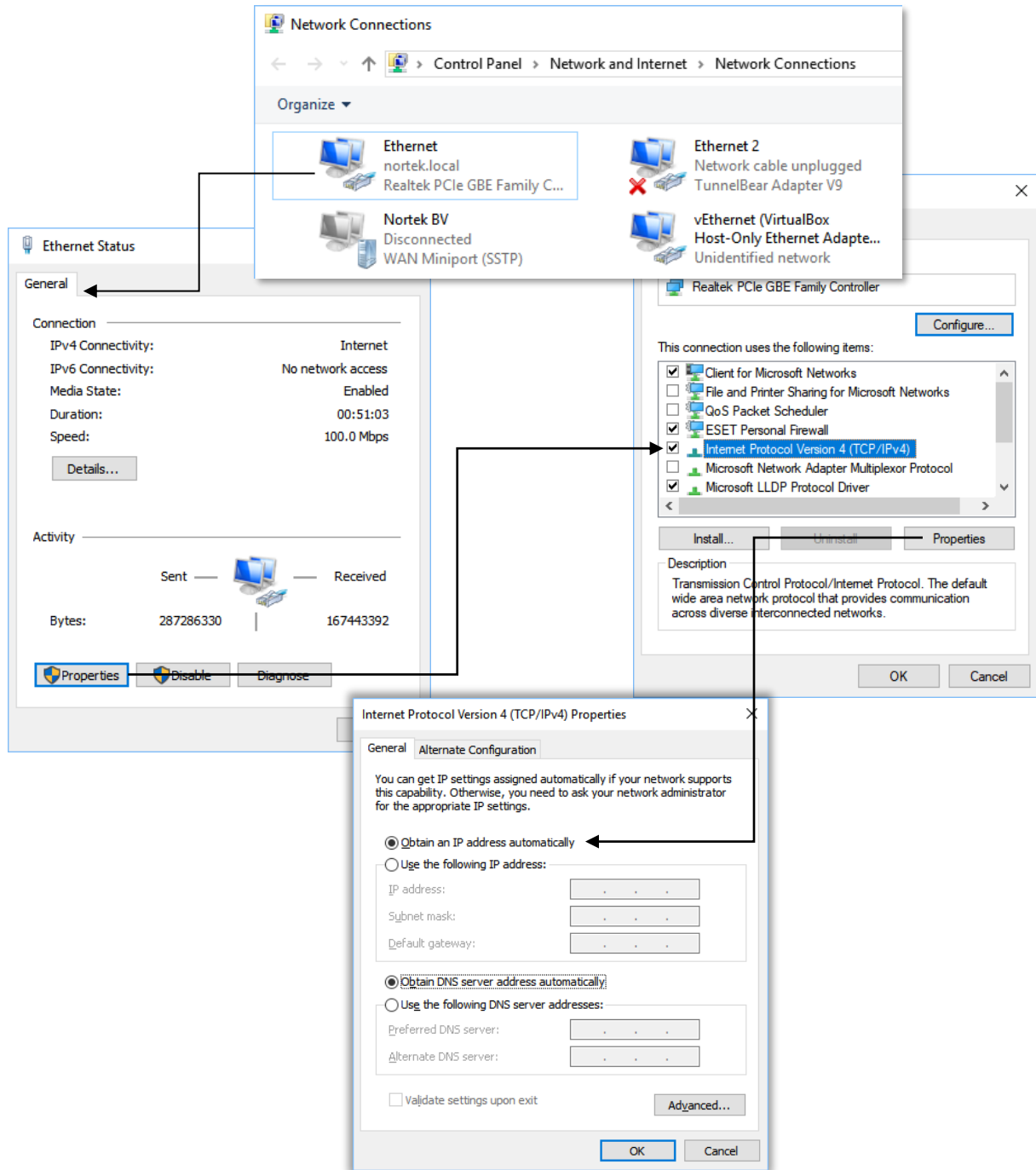


- A. Advanced Navigation GNSS
- B. GNSS power and communication cable
- C. Signature VM power and communication cable
- D. Processing unit
- E. Signature ADCP
- F. Standard LAN cable
- G. Remote desktop PC or a monitor, mouse and keyboard connected to processing unit

Auxiliary items:

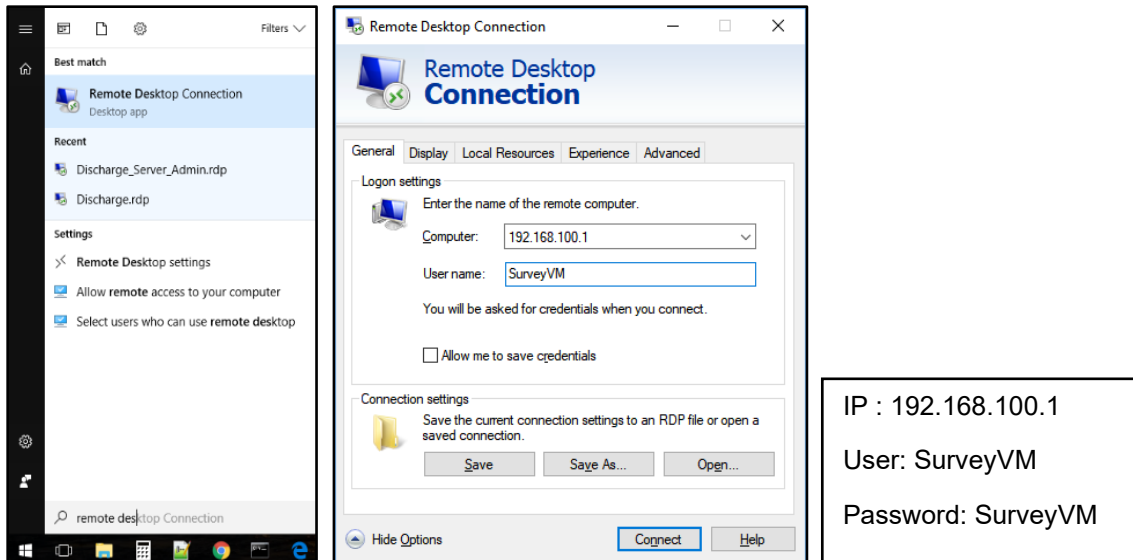
- Keyboard, mouse and monitor for direct control or laptop with LAN cable for remote desktop connection
 - 110-230 V AC mains, using the AC-DC power supply
 - 24 V DC current via the complementary supplied connector
1. Connect the ADCP and the processing unit using the ADCP cable. Connect the cable to the 6-pin connector in the center of the ADCP and connect the power and data connector on the other side onto the processing unit.
 2. Connect the GNSS and the processing unit using the GNSS cable. Connect the cable end with the smallest connector to the GNSS. If the locking nut locks somewhat difficult by hand, the small plastic tool may help out. Connect the other end to the processing unit and lock it by rotating the mid part of the connector 90 degrees.
 3. Place the GNSS antenna outside for proper heading and position data.
 4. Connect the processing unit to a power source using the supplied AC-DC convertor or the DC connector
 5. Connect a keyboard, mouse and monitor, or establish a remote desktop connection using the LAN port on the front of the processing unit.
 6. Switch on the lower section (interface) followed by the upper section (PC) of the processing unit.
 7. When using the option to connect to the LAN port on the front, use a computer that supports 'Remote Desktop'. Remote desktop clients are available for Windows, Macintosh, and Linux, but the instructions shown here are for Windows only. First make sure the Ethernet adapter is configured for: 'Obtain an IP address automatically'. (Control Panel » Network and Internet » Network Connections)

Nortek VM Coastal – Quick guide







Now connect the client computer to the interface, and then open 'Remote Desktop' (Hit the 'Windows' key, and just type 'remote desktop')

Nortek VM Coastal – Quick guide



The address of the Nortek VM PC is fixed to 192.168.100.1. The username is 'SurveyVM'. You can now click 'Save As' to save this connection for later. Click connect. If all is correct, a pop-up will appear asking for the password. The password is 'SurveyVM'.

8.  Start the Nortek VM acquisition software by clicking this icon on the desktop. Demo data is available under My documents and can be replayed in the acquisition software or opened for processing in Signature Review.
9.  In the Nortek VM acquisition software you can auto connect to the instruments by selecting this icon.
10.  You can configure and start a measurement by selecting this icon. When the instrument is started, the red 'beams' on the icon turn green. (Note: When the ADCP is in air it will not display any valid data.)
11.  Refer for mounting and full system information to the Signature VM operations manual by clicking this icon.

Nortek WEB

On our website, www.nortekgroup.com, you will find technical support and user manuals. General information, technical notes and user experience can also be found here.

Contact Information

If you need more information, support or other assistance, you are always welcome to contact us or any of our subsidiaries by email or phone.

Email to inquiry@nortekgroup.com, or support@nortekgroup.com for technical support.